



RECP #: 752718

RECORDED 5/8/2019 AT 1:13 PM BK# 2620 PG# 1760
Debra K. Lee, CLERK OF LARAMIE COUNTY, WY PAGE 1 OF 1

STATE OF WYOMING CORNER RECORD

(In compliance with the CORNER PERPETUATION AND FILING ACT, Wyoming Statutes, 1997 Section 33-29-140, et. seq., and the Rules and Regulations of the Board of Registrations for Professional Engineers and Professional Land Surveyors)

NORTHEAST CORNER SECTION 16, T. 18 N., R. 62 W., 6TH P.M., LARAMIE COUNTY, WYOMING

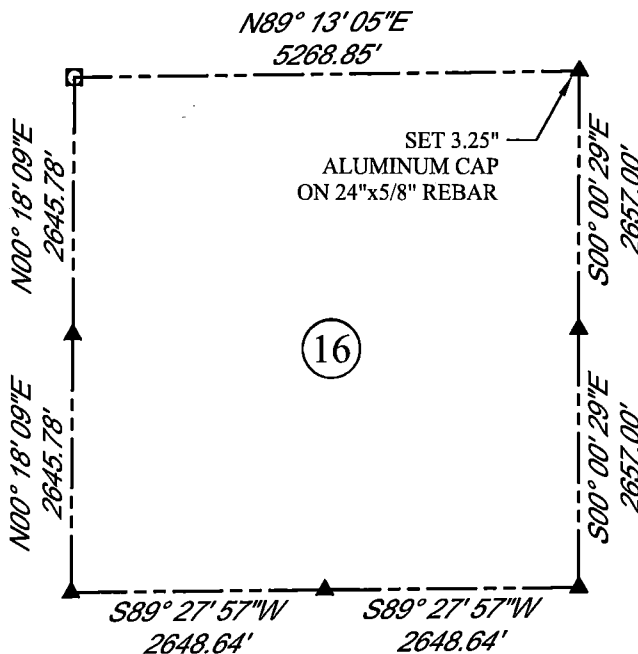
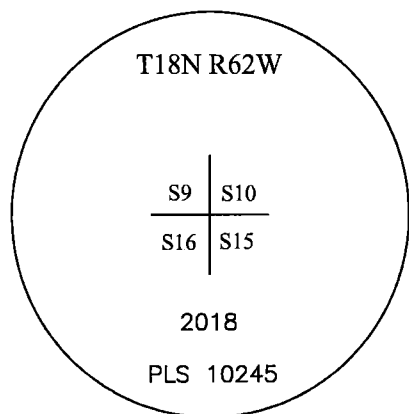
GLO: SET SANDSTONE 16X12X10, 10 ins. DEEP, MARKED WITH 4 NOTCHES ON S. SIDE AND 3 NOTCHES ON E. SIDE FOR COR. TO SEC'S 9,10,15,16.
FOUND: NOTHING. SET 3.25" ALUMINUM CAP AT PROPORTIONATE (DOUBLE) DISTANCE.



SCALE: NONE

NORTH DETERMINED BY
G.P.S OBSERVATIONS

SET 3.25" ALUMINUM CAP ON
REBAR 9" BELOW SURFACE,
STAMPED AS SHOWN



LEGEND:

- FOUND BLM CAP
- FOUND USFS CAP
- FOUND STONE
- FOUND PRIVATE MONUMENT
- ◆ CALCULATED POSITION
- ▲ SET MONUMENT (LS10245)
- SECTION LINE

DATE OF FIELD WORK: 10/01/2018 OFFICE REFERENCE: MERIDEN

CROSS INDEX DIAGRAM

	1	2	3	4	5	6	7	8	9	10	11	12	13	14	15	16	17	18	19	20	21	22	23	24	25		
A																											B
B																											C
C			6			5				4					3					2							D
D																											E
E																											F
F																											G
G			7			8				9					10					11							H
H																											I
I																											J
J																											K
K																											L
L			18			17				16					15					14							M
M																											N
N																											O
O			19			20				21					22					23							P
P																											Q
Q																											R
R																											S
S			30			29				28					27					26							T
T																											U
U																											V
V																											W
W																											X
X			31			32				33					34					35							Y
Y																											Z
Z	1	2	3	4	5	6	7	8	9	10	11	12	13	14	15	16	17	18	19	20	21	22	23	24	25		

WOOD
2615 AVIATION DRIVE
SHERIDAN, WY 82801
PH: 307-675-6400

THIS CORNER RECORD WAS
PREPARED BY ME OR UNDER
MY DIRECTION AND
SUPERVISION,
SEAL AND SIGNATURE

wood.

